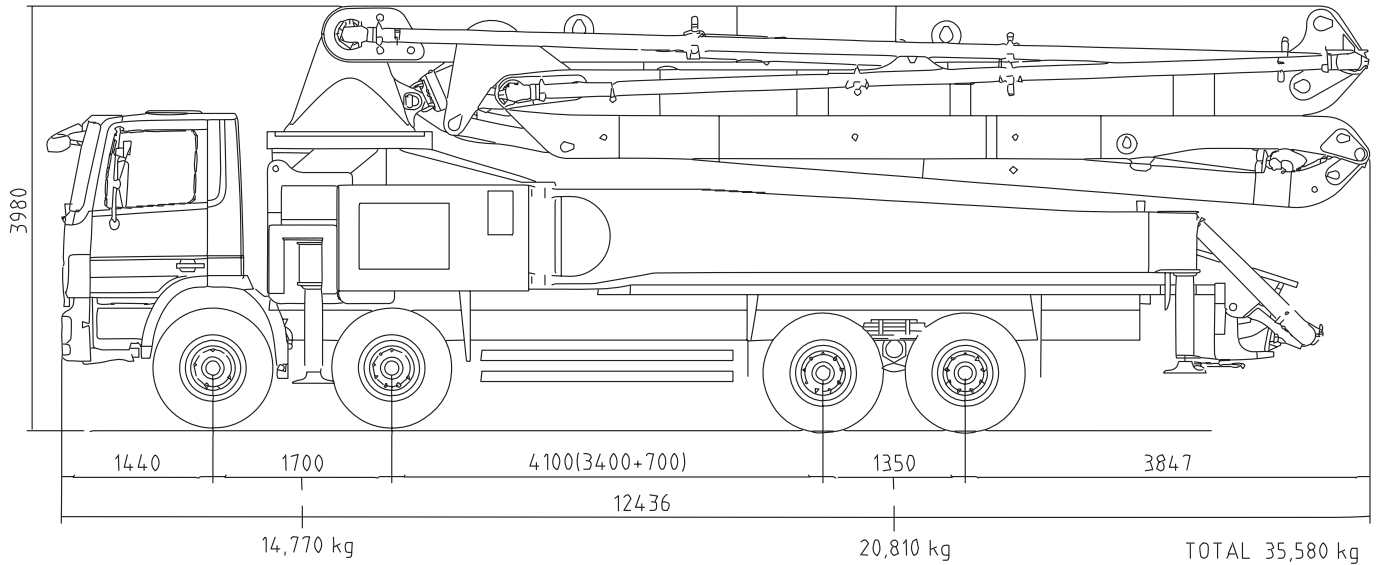


## Truck Mounted Placing Boom



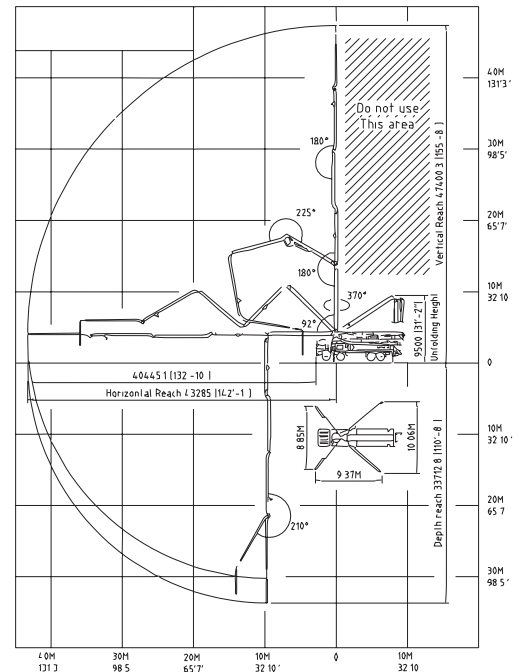
### BOOM SPECIFICATIONS

Vertical reach	47.4M
Horizontal reach	43.6M
Reach from front of truck	40.4M
Unfolding height	9.5M
Section articulation	92°/180°/225°/180°/210°
Rotation	370°
Delivery line	125mm
Proportional boom	Yes
End hose length	3.5M
Outrigger spread-front	8.85M
Outrigger spread-rear	10.06M
Max. outrigger weight	33,500kg

### PUMP SPECIFICATIONS

Maximum output	170m/h
Concrete cylinder	Ø230 x 2100
Stroke per minute	32
Concrete pressure	87.5 bar
Hopper capacity	0.6m
S-tube	Ø200 x Ø180
Hydraulic pump	Rexroth A20VL0190
Cycling system	Hydraulic w/ manual overrides
Max. aggregate size	40mm

### WORKING DIAGRAM



- Truck specifications: Mercedes BENZ4L40 (EURO2)
- Maximum theoretical values listed
- Photos and drawings are for illustrative purpose
- Right to make technical amendments reserved